

---

---

# Facility Needs Analysis

---

---

## St. Brendan Parish

### Archdiocese of Los Angeles

September, 2002

*Prepared By*



9415 West Forest Home Avenue  
Hales Corners, WI 53130  
Phone: 414-529-3366

# Table of Contents

---

<b>I. Background.....</b>	<b>1</b>
<b>II. Objectives and Methodology of the Study.....</b>	<b>2</b>
<b>III. Membership and Enrollment Profile.....</b>	<b>3</b>
Parish Membership	
School Enrollment	
Parish Finances	
<b>IV. Parish and School Facilities.....</b>	<b>5</b>
Current Facilities	
Parish Facilities	
School Facilities	
Parish Growth	
Program Needs	
<b>V. Survey Results.....</b>	<b>7</b>
<b>VI. Observations.....</b>	<b>14</b>
 <b>Appendix</b>	
Survey	

---

---

# I. Background

---

---

St. Brendan Parish Elementary School is well respected and successful. In 2001-02, the elementary school had 88 applicants for 30 seats in kindergarten. Because the school facility is somewhat limited, planning has been underway to expand the school. Currently, the school has no room large enough to assemble the student body. Student assemblies take place on the playground, weather permitting. Also, space is not available for all classes and some sessions are held in hallways and other areas.

Parish membership grew from 700 families in 2000 to 2,200 families in 2002. As a result, there is an increasing need for parish services and ministries. Currently there is no room for facility expansion on the church property, and it was necessary to acquire additional property next to the elementary school. Consequently, it is advisable to simultaneously address the long-range parish facility needs along with the facility needs of the elementary school.

Meitler Consultants, Inc. was contacted by Father Charles Gard on March 20, 2002. He requested a proposal that would assist the parish in making decisions prior to undertaking a fund drive and before finalizing architectural plans for facility expansion.

---

## **II. Objectives and Methodology of the Study**

---

The objectives outlined in the proposal from Meitler Consultants were as follows:

1. Assist the parish in assessment of long-term facility needs for all school and parish ministries and programs.
2. Facilitate the development of consensus about long-range facility priorities which will provide direction to the architect and fundraising counsel.

A Planning Committee was appointed to work with Meitler Consultants, Inc. Membership on the committee included the pastor, principal, several representatives from the school board, representatives from the parish council, and other individuals in leadership positions. The role of the committee was to assist Meitler Consultants in design of the survey, study of data, and review of the final report.

The following steps were taken by Meitler Consultants:

1. An initial meeting was scheduled with the consultants and the Planning Committee. The purpose of the meeting was to schedule the project and plan all steps involved in undertaking the study. Separate interviews were conducted with the pastor, principal and others.
2. Meitler Consultants requested existing data about facilities and other information.
3. Meitler Consultants scheduled a second visit to the parish.
  - Met with the Planning Committee for purposes of designing a parish-wide survey.
  - Met with the principal and members of the school board to discuss facility needs of the elementary school.
  - Met with parish staff members to discuss facility and space needs for parish programs.
4. Meitler Consultants designed a survey that was distributed to all parish members. The survey results were compiled and are summarized in this report.
5. Meitler Consultants scheduled other visits to the parish to conduct focus groups and additional meetings of the Planning Committee. Specifically, the focus groups consisted of meeting with the Parents Association, the Parish Council, the Finance Committee, a random selection of parents of pre-schoolers, a random selection of parents of the grammar-school students, and a random selection of parishioners.

6. Meitler Consultants combined the survey data, focus group results, interview summaries, analysis of information, and the consultants' professional experience to prepare the observations that are presented in this report.
7. A final meeting was scheduled in September with parish leaders to present the report.

---

## III. Membership and Enrollment Profile

---

The following facts provide a background for the study and a basis for the recommendations that are presented by the consultants.

### Parish Membership

- Parish households grew from 700 families in 2000 to 2,200 in 2002, and the parish is still growing.
- Total parish membership is estimated to be 4,800, based on the 2000 U.S. Census determination that there are an average of 2.8 persons per household in the City of Los Angeles.
- There are estimated to be 660 children ages 5 to 13 (K to 8<sup>th</sup>) in the parish membership (13.6% of the membership).
- In 2001-02, 60 children were enrolled in the parish religious education program. One hundred thirty-three (133) parish members' children were enrolled in St. Brendan Elementary School. Four hundred sixty-seven (467) children, or 71% of the total 5-13 age group in the parish (660 children) are not accounted for in either program.
- The number of baptisms in the parish continues to increase as follows:

Year	# of Baptisms
1997	28
1998	34
1999	35
2000	44
2001	66
2002	35 so far this year

- Within a one-mile radius of the parish, population growth from 1990 to 2001 was 12%, and from 2001 to 2006 it is projected to be 4%. Within a five-mile radius for the same years growth was 3% and is projected to be 1%. (*Source: National Decision Systems*)

## School Enrollment

- The 2001-02 enrollment in St. Brendan School was 30 in kindergarten and 35 in grades 1 to 8 for an enrollment of 311 children. (133 were in-parish, and 178 were out-of-parish.)
- There were 88 applicants for the 30 openings in kindergarten in 2001-02, and there was a waiting list in other grades.
- Some parish members are unable to enroll their children in the school due to lack of available space.

## Parish Finances

- Parish gross income was \$933,000 in 2000-01.
- The school budgeted \$963,000 gross income for 2001-02.
- The parish acquired five city lots for approximately \$3.5 million. Buildings on these properties will eventually be removed so that parish facilities can be expanded.

---

---

## **IV. Parish and School Facilities**

---

---

### **Current Facilities**

St. Brendan Parish and School are located on two separate sites within walking distance of each other in the Hancock Park area of Los Angeles. The parish serves a population that is quite diverse in its racial, ethnic and socio-economic makeup.

### **Parish Facilities**

The parish site has a beautiful, recently refurbished church and a parish rectory/office/meeting facility that is serving the needs of a rapidly growing parish population. Currently, the site has several meeting rooms that are sufficient for small group or committee meetings, and a reception area that was once part of a residence suite. In addition, there is a parish hall with an adjacent kitchen that is used for all other larger group meetings and receptions. The parish hall has limited capacity for a parish community of this size and is only accessible by descending a rather steep staircase with no handicap access. There are only 85 spaces for on-site parking.

Office space for a growing parish staff is insufficient and several staff members are currently sharing an office. In addition, it is anticipated that the parish will be adding more staff members in the next several years to meet growing parish needs and there will be a need for more office and meeting space. There is currently no large assembly area for the parish or school other than the church.

### **School Facilities**

St. Brendan School serves 311 parochial school students in a regular day program as well as approximately 60 students in weekly religious education classes. The school facility consists of a basic classroom building containing nine classrooms, a small library, a computer lab that seats approximately twenty students, a small office and a faculty room containing a copy machine and seating for approximately six individuals. There are four student restrooms and a faculty restroom. The yard consists of two basketball courts, a staff parking lot for approximately 21 automobiles, and a separate primary playground. There is a vacant lot where the convent once stood and the parish recently acquired several additional lots containing an apartment building and a commercial shop.

## Parish Growth

St. Brendan Parish has experienced considerable growth over the past two years since the arrival of Fr. Gard. Five years ago the parish served 800 families and today that number has grown to 2,200 families. The weekly parish offering has grown from \$4,000 to approximately \$15,000 in the past two years. In the last year alone, thanks in part to a stewardship program, parish income has risen 70%. The parish offers five Sunday Masses, including a Youth Mass. All of the Masses are well attended.

The school has been operating at enrollment capacity under the capable leadership of Sr. Marta Ann who became the school's principal fourteen years ago. Last year there were 311 students in nine grades. Most classes have a waiting list, and 80 or more students apply for 30 seats in kindergarten each year. There are 35 (and in some cases 36) students per class in grades one through eight. While not all of the students who apply are qualified for the school, there are many qualified students who are unable to enroll because of space limitations. With the recent growth in both parish enrollment and baptisms, it can be anticipated that demand for the school will increase in the coming years. Recent census statistics show a slow but steady growth in population over the next five years.

## Program Needs

Parish and school leaders are developing a vision for the future that includes substantial growth in programs to meet the needs of a burgeoning population. Plans at the parish include growth of a vibrant youth and young adult program, a more extensive adult education program and an expanded community outreach program. These plans will require an additional investment in staff and facilities.

The school community expresses a need to provide upgraded programs in performing and visual arts, computer technology, science and athletics. There is also a desire to provide an esthetically pleasing play area for children that includes some green space. The school operates an after-school-care program that would benefit from designated space.

Both the school and parish community agree on the primary importance of building a multipurpose gathering place that can be used for a variety of large group school and parish activities. This facility would not only meet the program needs of both entities, but also provide a much needed link between the parish and the school by providing a place for social and educational events. A multi-use building would also contribute to the blending of the diverse ethnic groups through integrated activities.

Some division exists over the need to reduce class size in the school, but the results of the survey and focus group interviews indicate that many parents and parishioners favor class size reductions.

---



---

# V. Survey Results

---



---

A survey of parish members was conducted to assess their view of the need for new parish facilities and the various options. The survey was mailed in June 2002 and responses were due within two weeks of the distribution date. Parish members were encouraged by way of announcements and an advance mailing to their homes to return the survey. A copy of the survey form is included at the end of this report (*See Appendix*).

Percentages presented in some of the figures in this chapter may not total to 100% due to rounding and also because all respondents don't answer every question.

The survey was mailed to both parish members and school families. However, surveys were color coded so that data from the two groups could be sorted separately. The response rate was quite good, with almost 500 surveys returned for analysis.

Figure 1

### Survey Response Rate

<b>Respondent</b>	<b>Mailed</b>	<b>Returned</b>	<b>% Return</b>
Parish Member	1,384	370	27%
School Family	218	120	55%
<b>Total</b>	<b>1,602</b>	<b>490</b>	<b>31%</b>

Ninety-two percent (92%) of respondents are members of St. Brendan Parish, 4% other Catholic parishes, 2% other denominations of faith and 1% are not church members.

The number of survey respondents is somewhat evenly distributed by age group including 22% who are over age 60.

Figure 2

### Age of Respondents

<b>Age</b>	<b>% Return</b>
Under 20	0%
20 to 30	9%
31 to 40	23%
41 to 50	28%
51 to 60	18%
Over 60	22%
<b>Total</b>	<b>100%</b>

It is common that active parish members take the time to respond to a parish survey of this nature. Between 70% and 80% of respondents attend Mass weekly in most age groups.

Figure 3

**Mass Attendance**

<b>Age</b>	<b>Weekly</b>	<b>Twice a Month</b>	<b>Monthly</b>	<b>Less than Monthly</b>
Under 20	100%	0%	0%	0%
20 to 30	84%	5%	9%	0%
31 to 40	75%	13%	2%	5%
41 to 50	72%	13%	5%	5%
51 to 60	82%	7%	2%	2%
Over 60	84%	2%	0%	3%

Responses to Question 4 in the survey were sorted by the age group of respondents. Data in Figure 4 shows that there are relatively small differences between the three age groups. However, it is particularly interesting to note that respondents over age 60 put high priority on Catholic school education and CCD programs.

Figure 4

Question 4: Priority that should be given to programs by St. Brendan Parish.

Program	Age 40 and Under				
	High Priority	Medium Priority	Low Priority	High Priority	Low Priority
Catholic elementary school	83%	12%	3%	1%	0%
Adult religious education	28%	33%	29%	5%	5%
Child religious education (CCD)	52%	29%	17%	1%	1%
Community outreach	31%	36%	27%	5%	1%
Social activities	7%	24%	38%	22%	9%
Worship	77%	13%	7%	1%	1%
Other *	69%	6%	19%	0%	6%

Program	Age 41 to 60				
	High Priority	Medium Priority	Low Priority	High Priority	Low Priority
Catholic elementary school	81%	11%	5%	1%	1%
Adult religious education	24%	35%	29%	9%	4%
Child religious education (CCD)	54%	31%	11%	2%	1%
Community outreach	33%	26%	31%	6%	4%
Social activities	12%	20%	33%	19%	16%
Worship	80%	12%	7%	1%	1%
Other *	56%	44%	0%	0%	0%

Program	Over Age 60				
	High Priority	Medium Priority	Low Priority	High Priority	Low Priority
Catholic elementary school	86%	10%	3%	1%	0%
Adult religious education	32%	28%	33%	5%	2%
Child religious education (CCD)	76%	10%	10%	4%	0%
Community outreach	23%	28%	35%	9%	5%
Social activities	10%	19%	35%	21%	12%
Worship	82%	8%	2%	5%	2%
Other *	45%	18%	27%	0%	9%

\* Twenty-four respondents provided a written response for "Other". Only four items were mentioned more than once: music in worship services, teen outreach, counseling and scripture study.

Each of the proposed facility additions are felt to be important. However, all three age groups of respondents clearly indicate that additional school classrooms is the highest priority.

Figure 5

*Question 5: Priority that should be given to new or expanded facilities by St. Brendan Parish.*

Facility	Age 40 and Under				
	High Priority	Medium Priority	Low Priority	High Priority	Low Priority
Adult meeting rooms	9%	26%	41%	11%	13%
Social hall/gym/kitchen	29%	28%	30%	9%	3%
Religious education rooms	24%	34%	28%	10%	4%
Additional school classrooms (also used for religious education)	67%	20%	8%	3%	3%
Field/playground space	39%	32%	19%	6%	4%
Other *	79%	14%	7%	0%	0%

Facility	Age 41 to 60				
	High Priority	Medium Priority	Low Priority	High Priority	Low Priority
Adult meeting rooms	18%	18%	40%	12%	13%
Social hall/gym/kitchen	40%	23%	21%	9%	7%
Religious education rooms	28%	30%	25%	8%	10%
Additional school classrooms (also used for religious education)	60%	18%	11%	4%	7%
Field/playground space	40%	29%	19%	5%	7%
Other *	68%	18%	14%	0%	0%

Facility	Over Age 60				
	High Priority	Medium Priority	Low Priority	High Priority	Low Priority
Adult meeting rooms	22%	25%	35%	11%	7%
Social hall/gym/kitchen	34%	23%	30%	5%	8%
Religious education rooms	37%	24%	31%	3%	3%
Additional school classrooms (also used for religious education)	60%	20%	10%	3%	6%
Field/playground space	39%	31%	20%	6%	5%
Other *	50%	38%	13%	0%	0%

\* Numerous respondents provided written comments for “Other”. Written comments included: multipurpose room (gym, auditorium) – 13, science labs – 8, music/art room – 7, preschool – 6, cafeteria – 5, parking – 4, computer room – 4, school play area – 3, restrooms in hall – 3, library – 2, convent – 2 and high school grades – 2.

All age groups, including St. Brendan School families, agree that facilities should be expanded. There is also strong support among all groups to reduce class size and to expand to two classes per grade level. St. Brendan School parents also agreed with two classes per grade level (74%) compared to only 20% who disagreed.

Furthermore, the survey indicated support for a fund drive. However, a capital fund drive feasibility study is needed to actually determine how much money could be raised in a capital campaign.

Figure 6

Question 6: Evaluate each of the following statements:.

Statement	Age 40 and Under					
	Agree	Somewhat Agree	Neutral	Somewhat Disagree	Disagree	
St. Brendan Parish and School should expand facilities.	79%	8%	13%	0%	0%	
St. Brendan School should strive to reduce class size from 35 to 25 students and expand to 2 classes per grade.	67%	12%	9%	5%	8%	
St. Brendan School should remain as it is now - single classes of each grade level with 35 students per grade.	14%	11%	19%	17%	39%	
I would support a fund drive to expand facilities.	59%	18%	19%	2%	2%	

Statement	Age 41 to 60					
	Agree	Somewhat Agree	Neutral	Somewhat Disagree	Disagree	
St. Brendan Parish and School should expand facilities.	67%	20%	9%	1%	3%	
St. Brendan School should strive to reduce class size from 35 to 25 students and expand to 2 classes per grade.	48%	16%	13%	7%	16%	
St. Brendan School should remain as it is now - single classes of each grade level with 35 students per grade.	25%	15%	19%	16%	26%	
I would support a fund drive to expand facilities.	43%	20%	28%	3%	5%	

Statement	Over Age 60					
	Agree	Somewhat Agree	Neutral	Somewhat Disagree	Disagree	
St. Brendan Parish and School should expand facilities.	76%	11%	9%	1%	2%	
St. Brendan School should strive to reduce class size from 35 to 25 students and expand to 2 classes per grade.	59%	15%	18%	1%	7%	
St. Brendan School should remain as it is now - single classes of each grade level with 35 students per grade.	14%	13%	18%	17%	37%	
I would support a fund drive to expand facilities.	34%	29%	24%	6%	7%	

Statement	St. Brendan School Parents					
	Agree	Somewhat Agree	Neutral	Somewhat Disagree	Disagree	
St. Brendan Parish and School should expand facilities.	81%	11%	7%	1%	0%	
St. Brendan School should strive to reduce class size from 35 to 25 students and expand to 2 classes per grade.	67%	7%	5%	5%	15%	
St. Brendan School should remain as it is now - single classes of each grade level with 35 students per grade.	26%	8%	16%	12%	39%	
I would support a fund drive to expand facilities.	64%	18%	13%	3%	2%	

The remaining questions in the survey provided an interesting profile of survey respondents, but most of the information isn't highly relevant to the current planning process.

- Eighty-nine percent (89%) of survey respondents with children ages 4 and younger said that they plan to enroll their children in St. Brendan School (*Question 8*).
- Survey respondents who currently have children ages 5 to 12 enroll their children in the following schools (*Question 9*):
  - ❖ St. Brendan School 74%
  - ❖ Other Catholic schools 8%
  - ❖ Private schools 9%
  - ❖ Public schools 8%
  - ❖ Home school 0%
- Only 31 respondents have children enrolled in the parish religious education program (*Question 10*).
- Thirty respondent families had tried to enroll their children in St. Brendan School but were unable to do so because space was not available (*Question 11*).

---

## VI. Observations

---

On page 3, it was observed that only 29% of parish children ages 5 to 13 are enrolled in the school or the parish religious education program. Additionally, large numbers of children continue to be baptized each year, and the school has space to enroll less than half of the applicants. These facts, along with the obvious space shortage, are the basis for the observations that follow.

1. The parish and school community should continue to develop a long-range facilities plan that takes into account the tremendous growth in the number of families now served in the parish. This plan should also reflect vision for the future program needs at both the parish and school as identified by staff, community groups and the parish survey results included in this report.
2. The architectural firm should prepare a master plan that includes all possible future construction, including potential 8 or 10 additional classrooms and other facilities that may not be funded in the first phase of construction.
3. The development and construction of the parish facilities should be done in phases. This will allow the parish to address needs in order of priority and at the same time insure that available space is allocated properly in order to provide for future projects.
4. There is strong consensus to include a multi-use facility, located on the school site, in the first phase of the facilities plan. The multi-use facility should include a full gymnasium and other amenities that serve the needs of both parish and school. The facility should be located on the property in a way that allows for the later construction of additional classrooms and support facilities to serve growing demand. It is our further recommendation that the parish initiate a capital campaign feasibility study in the near future to determine the level of donor interest in this project. Based on the potential donor response, it can be determined how many of the desired new facilities can be built during the first phase of construction.
5. The parish and school should continue to gather demographic information to help determine the optimum time for expansion of the elementary school. There is much factual and anecdotal evidence that indicates the need for this expansion. Further data needs to be gathered and analyzed in order to confirm that there are sufficient numbers of qualified students to justify having two classes of each grade, and also reducing class size.

Although expansion of school enrollment may not occur as a result of the first phase of construction, there are some compelling reasons why it should be addressed:

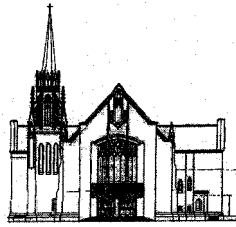
- a. Over 80 applicants for 30 kindergarten seats
- b. Strong parishioner support in the survey for expanding the school enrollment.

	<b>Percent Agree</b>
St. Brendan School Parents	74%
St. Brendan Parish Members	
Age 40 and under	79%
Age 41 to 60	64%
Over age 60	74%

- c. The need for expansion of the religious education program and providing space for more students.
6. The class size issue should receive further study. While there appears to be much sentiment in favor of reducing class sizes in conjunction with expansion of the school, there are financial issues related to budget and tuition that should receive attention. We recommend that class size reduction be approached with caution and phased in slowly to reduce the financial impact on parents.
7. Other needs that should be addressed in the long-range facilities plan include:
- Additional parking for parish and school events
  - Expansion of offices to meet current and projected staff growth
  - Addition of support facilities for the school such as computer lab\*, science lab, extended care room and fine arts room
  - Redesign of the school yard to provide an aesthetically pleasing and functional play area that makes optimum use of available space

\* *Some schools are evaluating if computer labs should be permanent or if they should be of a portable nature.*

# Appendix



## St. Brendan Church

June 2002

Enclosed is an important survey from St. Brendan Parish. Please respond as soon as possible and return the survey in the enclosed envelope. The purpose of this survey is to determine the facility and educational needs for our parish and school programs.

Our parish has experienced tremendous growth in the last two years from 700 families in 2000 to 1,800 families in 2002. The demand for St. Brendan School's excellent education resulted in 88 applicants for 30 kindergarten openings this year. Because of the need to provide better facilities for the school and parish, the parish has purchased the property directly to the north of the school. The additional property was necessary because the City of Los Angeles would not allow future development without more property for additional parking.

In September 2002 Meitler Consultants, Inc. will provide a full report and recommendation based on the survey and interview process. This report will assist the parish in making decisions prior to finalizing the educational and architectural plans for future facilities for our parish and school.

Thank you for your prompt attention to this survey. It is very important to the school and parish as we plan for the future.

Sincerely,

*Father Charles Gard*

Fr. Charles Gard  
Pastor

*Sister Marta Ann Cota, C.S.J.*

Sr. Marta Ann Cota, C.S.J.  
Principal

## St. Brendan Parish Survey

**Your response is very important! The survey should be returned by June 18, 2002.**

### Information About Yourself

1. My **age** is:

- |                                   |                                   |     |
|-----------------------------------|-----------------------------------|-----|
| <input type="checkbox"/> Under 20 | <input type="checkbox"/> 41 to 50 | (5) |
| <input type="checkbox"/> 20 to 30 | <input type="checkbox"/> 51 to 60 |     |
| <input type="checkbox"/> 31 to 40 | <input type="checkbox"/> Over 60  |     |

2. In which church are you a registered member?

- |  |     |
|--|-----|
| <input type="checkbox"/> St. Brendan Parish          | (6) |
| <input type="checkbox"/> Other Catholic parish       |     |
| <input type="checkbox"/> Other denomination or faith |     |
| <input type="checkbox"/> Not a church member         |     |

3. I attend Mass (**check one**):

- |  |     |
|--|-----|
| <input type="checkbox"/> Weekly            | (7) |
| <input type="checkbox"/> Twice a month     |     |
| <input type="checkbox"/> Monthly           |     |
| <input type="checkbox"/> Less than monthly |     |

### Parish Priorities

4. What priority should be given to the following programs by St. Brendan Parish?  
(**Circle one number for each program.**)

	High Priority	2	Medium Priority	3	4	Low Priority	
Catholic elementary school	1	2	3	4	5		(8)
Adult religious education	1	2	3	4	5		
Child religious education (CCD)	1	2	3	4	5		
Community outreach (Hopenet, soup kitchen, etc.)	1	2	3	4	5		
Social activities (dances, athletics, parish receptions, etc.)	1	2	3	4	5		
Worship	1	2	3	4	5		
Other ( <i>please specify</i> ) _____	1	2	3	4	5		(14)

5. What priority should be given to the following new or expanded facilities by St. Brendan Parish?  
(**Circle one number for each item.**)

	High Priority	2	Medium Priority	3	4	Low Priority	
Adult meeting rooms	1	2	3	4	5		(15)
Social hall/gym/kitchen	1	2	3	4	5		
Religious education rooms	1	2	3	4	5		
Additional school classrooms (also used for religious education)	1	2	3	4	5		
Field/playground space	1	2	3	4	5		
Other ( <i>please specify</i> ) _____	1	2	3	4	5		
_____	1	2	3	4	5		
_____	1	2	3	4	5		
_____	1	2	3	4	5		(22)

6. Please evaluate each of the following statements:  
*(Circle one number for each item)*

St. Brendan Parish and School should expand facilities.

St. Brendan School should strive to reduce class size from 35 to 25 students and expand to 2 classes per grade level by adding 1 class per grade level beginning with kindergarten.

St. Brendan School should remain as it is now – single classes of each grade level with 35 students per grade.

I would support a fund drive to expand facilities.

	Agree	Somewhat Agree	Neutral	Somewhat Disagree	Disagree	
St. Brendan Parish and School should expand facilities.	1	2	3	4	5	(23)
St. Brendan School should strive to reduce class size from 35 to 25 students and expand to 2 classes per grade level by adding 1 class per grade level beginning with kindergarten.	1	2	3	4	5	
St. Brendan School should remain as it is now – single classes of each grade level with 35 students per grade.	1	2	3	4	5	
I would support a fund drive to expand facilities.	1	2	3	4	5	(26)

## Important – Please Read

**If you have children ages 12 and younger, continue answering questions 7 to 11. If you do not have children ages 12 and younger, stop here and return the survey.**

## Ages of Your Children

7. How many children do you have ages **12 and younger**? \_\_\_\_\_ Number of children.(27)

Check the **age(s)** of **each** of your children who are 12 and younger.

- Less than 1 Year (28-29)
- 1 Year
- 2 Years
- 3 Years
- 4 Years
- 5 Years
- 6 Years
- 7 Years
- 8 Years
- 9 Years
- 10 Years
- 11 Years
- 12 Years (52-53)

## Educational Programs

8. Where do you plan to enroll your children **ages 4 and younger** when they enter kindergarten?

Assume space would be available.

*(Check only one)*

- St. Brendan Catholic School (54)
- Other Catholic school
- Private school
- Public school
- Home school

9. If you have children **ages 5 to 12**, where are they currently enrolled?

- St. Brendan Catholic School (55)
- Other Catholic school
- Private school
- Public school
- Home school

10. Do you **currently** have children enrolled in the parish Religious Education program?

- Yes
- No (56)

11. Did you **try to enroll** your children in St. Brendan School, but were unable to do so because space was not available?

- Yes
- No (57)

If “yes”, what are the current **ages** of the children you tried to enroll?

- 5 Years
- 6 Years
- 7 Years
- 8 Years
- 9 Years
- 10 Years
- 11 Years
- 12 Years (58)

## Comments

---

Please **return the survey by June 18, 2002** in the enclosed pre-addressed envelope to Meitler Consultants, Inc., 9415 W. Forest Home Avenue, Hales Corners, WI 53130. Thank you for your assistance.